

## QD套 QD Bush

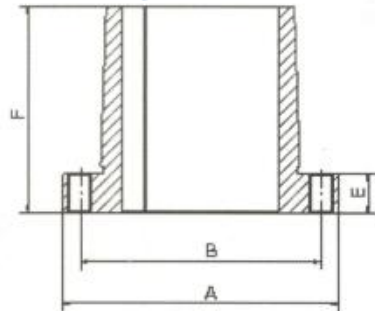
我公司可为用户提供如下表所列的QD套。

Our company can provide our customers with the QD Bush in the following table.

QD套 型号 QD Bush Size	公制孔径 Metric Bore (mm)				英制孔径 Imperial Bore (inch)				最大扭矩 Max Torque Capacity (NM)	螺钉扭 矩 Wrench Torque (NM)	螺钉 Bolts	
	最小 值 Min.	最大值 Max. Bore With			最小值 Min.	最大值 Max. Bore With					数量 Qty	规格 Size
		标准 键槽 Full K' way	浅键槽 Shallow K' way	无键 槽 No K' way		标准 键槽 Full K' way	浅键槽 Shallow K' way	无键槽 No K' way				
JA	12	25	30	30	1/2	1	1 3/16	1 1/4	113	6.2	3	M5
SH	12	32	40	42	1/2	1 1/8	1 5/8	1 11/16	396	12.5	3	M6
SDS	12	42	50	50	1/2	1 1/4	1 15/16	2	567	12.5	3	M6
SD	12	42	50	50	1/2	1 1/4	1 15/16	2	567	12.5	3	M6
SK	12	50	60	65	1/2	1 3/8	2 1/2	2 5/8	793	20	3	M8
SF	12	55	70	75	1/2	1 5/8	2 13/16	2 15/16	1246	41	3	M10
E	24	70	85	-	7/8	1 5/8	3 1/2	-	2266	82	3	M12
F	28	80	100	100	1	2	3 15/16	4	3400	102	3	M14
J	40	100	110	-	1 1/2	2	4 1/2	-	5100	184	3	M16
M	55	120	135	-	2	2 1/2	5 1/2	-	9633	306	4	M20
N	65	130	140	-	2 7/16	2 1/2	5 7/8	-	17000	408	4	M22
P	80	150	170	-	2 15/16	3	7	-	28333	612	4	M24
W	100	190	210	-	4	3	8 1/2	-	42500	816	4	M28
S	140	230	250	-	5 1/2	3 1/2	10	-	70833	1020	5	M33



QD型号 QD Bush Size	A	B	E	F
JA	51	42	8	25
SH	67	57	11	33
SDS	81	68	11	33
SD	81	68	11	46
SK	98	84	14	49
SF	117	98	16	52
E	152	127	22	70
F	168	143	25	95
J	184	159	29	117
M	229	200	32	171
N	254	216	38	206
P	298	254	44	238
W	381	324	51	289
S	451	381	70	387



## QD套安装、拆卸说明 QD Bush Installation and Dismantling



### 1、法兰盘靠近机器或原动机：Conventional Mounting (Bush flange is toward the close end):

#### 装配 Fitting:

将QD套放至连接件轮毂内，使QD套螺孔对准轮毂的光孔，并将螺栓轻轻拧入，然后一同装到轴上，达到预定位置后，将螺栓交替逐步拧紧，直至达到表中规定的螺钉扭矩。

Place QD Bush in the product and insert cap screws through drilled holes in product hub. Tighten cap screws (finger tight) into threaded holes in bush flange. Slip loosely assembled unit into desired position on shaft. Tighten each cap screw alternately and evenly to specified wrench torque.

#### 拆卸 Remove:

将螺栓拆下，拧入轮毂螺孔内，并加力使QD套和轮毂分离。

Remove cap screws and place them in holes threaded in product hub. As they are drawn up they will act as jack screws against the flange of bush to release grip between bush and hub.

### 2、法兰盘远离机器或原动机：Reverse Mounting (Small end of bush is toward the close end):

#### 装配 Fitting:

将QD套放至连接件轮毂内，使QD套光孔对准轮毂的螺孔，并将螺栓轻轻拧入，然后一同装到轴上，达到预定位置后，将螺栓交替逐步拧紧，直至达到表中规定的螺钉扭矩。

Place cap screw through drilled holes in bush flange and install (finger tight) into threaded holes in product hub. Slip loosely assembled unit (small end of bush first) into desired position of shaft. Tighten each cap screw alternately and evenly to specified wrench torque.

#### 拆卸 Remove:

将螺栓拆下，拧入QD套螺孔内，并加力使QD套和轮毂分离。

Remove cap screws and place them in holes threaded in bush flange. As they are drawn up they will act as jack screws against the product hub to release grip between bush and hub.